

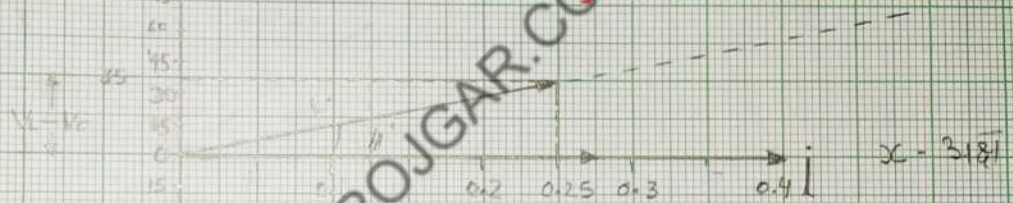
EXPT = 14

$V_R$  और  $(V_L \sim V_C)$  के मध्य वक्र

$(V_L - V_C)$   
 $131 - 96 = 35$

y अक्ष  
 $V_L$  135  
131

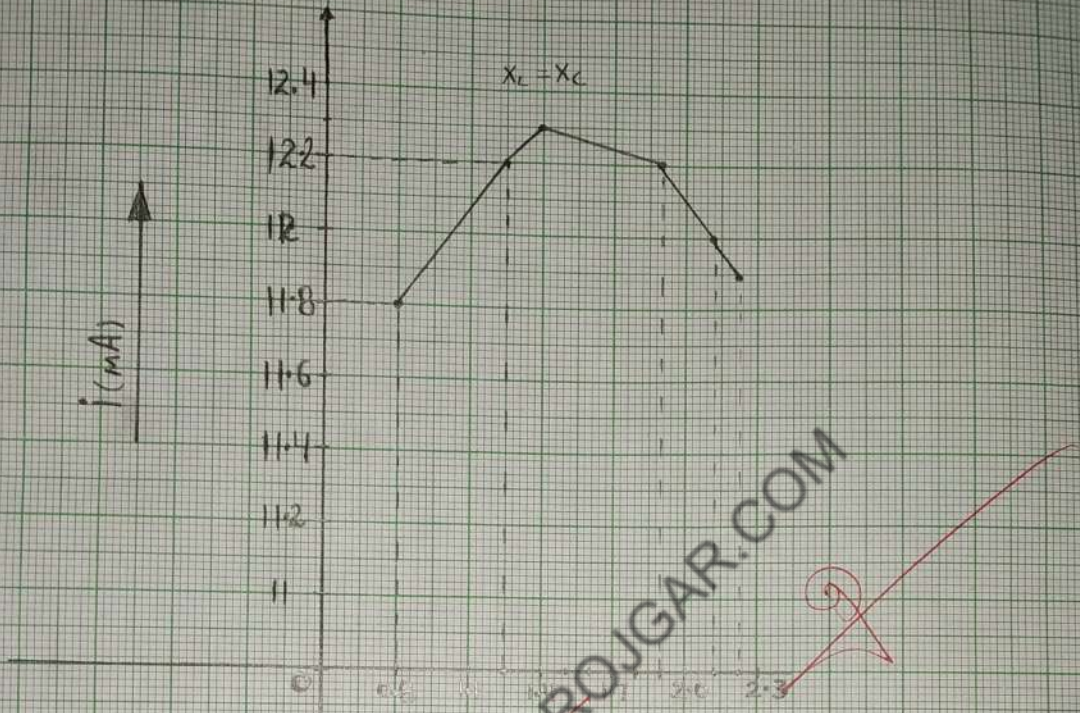
$V_R = 211$   
 $V_L = 131$   
 $V_C = 96V$   
 $I = 0.25 A$   
 $\phi = 11^\circ$



ELECTRICALROJGAR.COM

EXPT - 15

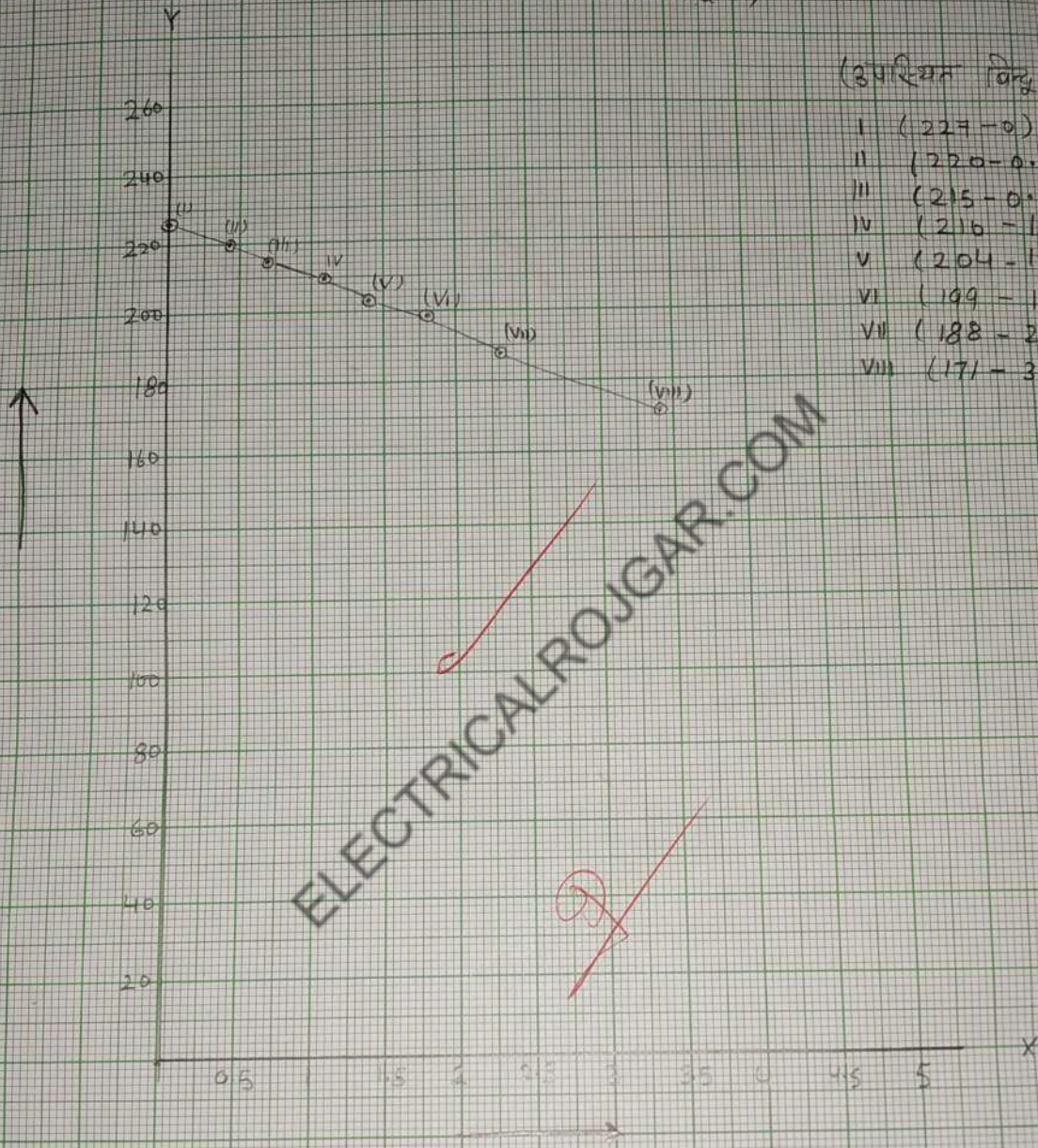
Page No. (91)



ELECTRICALPOJGAR.COM

EXPT-22

Y 3.125  $\Rightarrow$  4 अंश 2.5 अंश = 2.0 V  
 X 3.125  $\Rightarrow$  1 अंश 2.0 अंश = 0.5 Amp

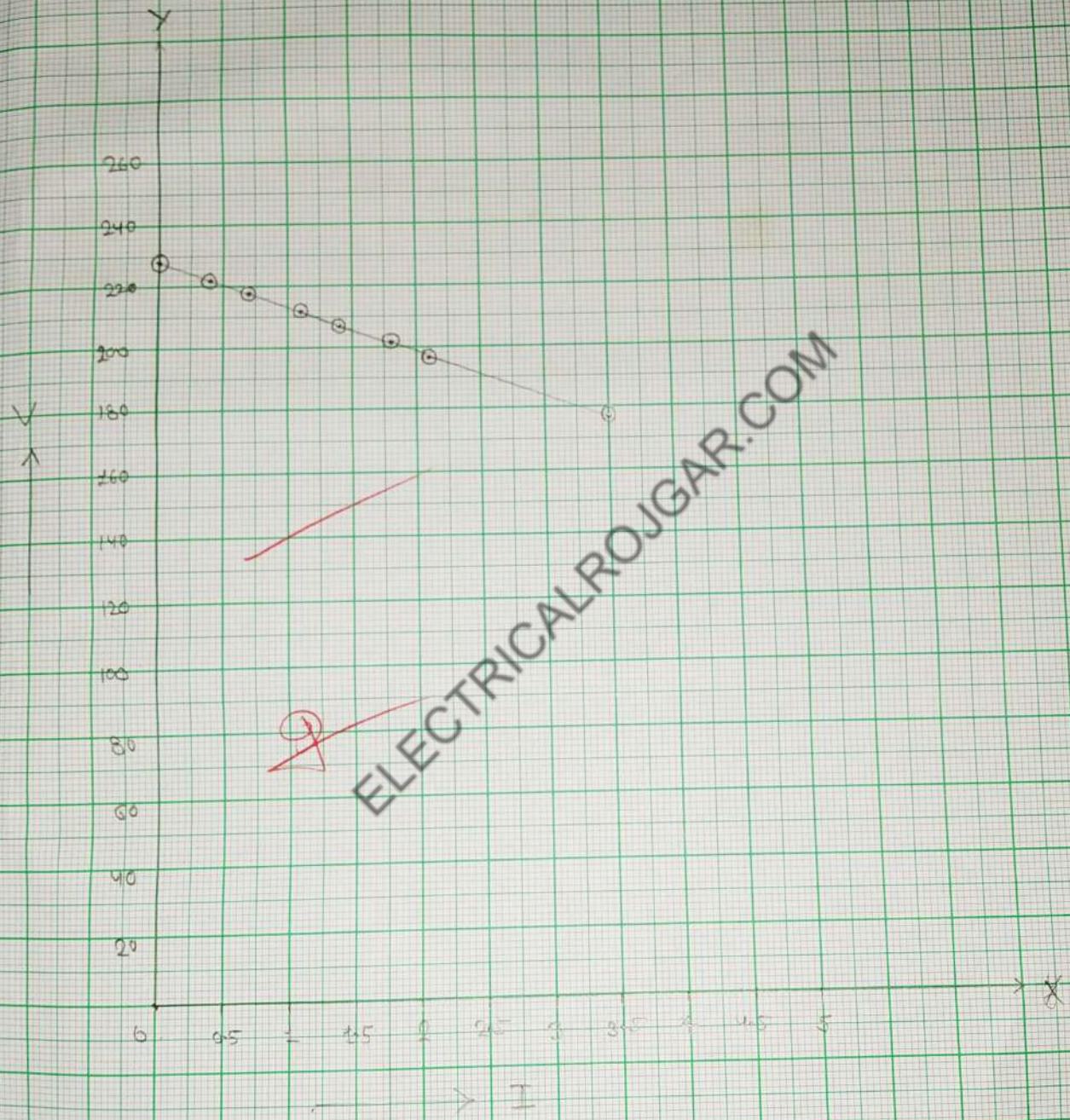


(अंशिक बिंदु)

- I (227 - 0)
- II (220 - 0.4)
- III (215 - 0.7)
- IV (210 - 1.1)
- V (204 - 1.4)
- VI (199 - 1.85)
- VII (188 - 2.3)
- VIII (171 - 3.4)

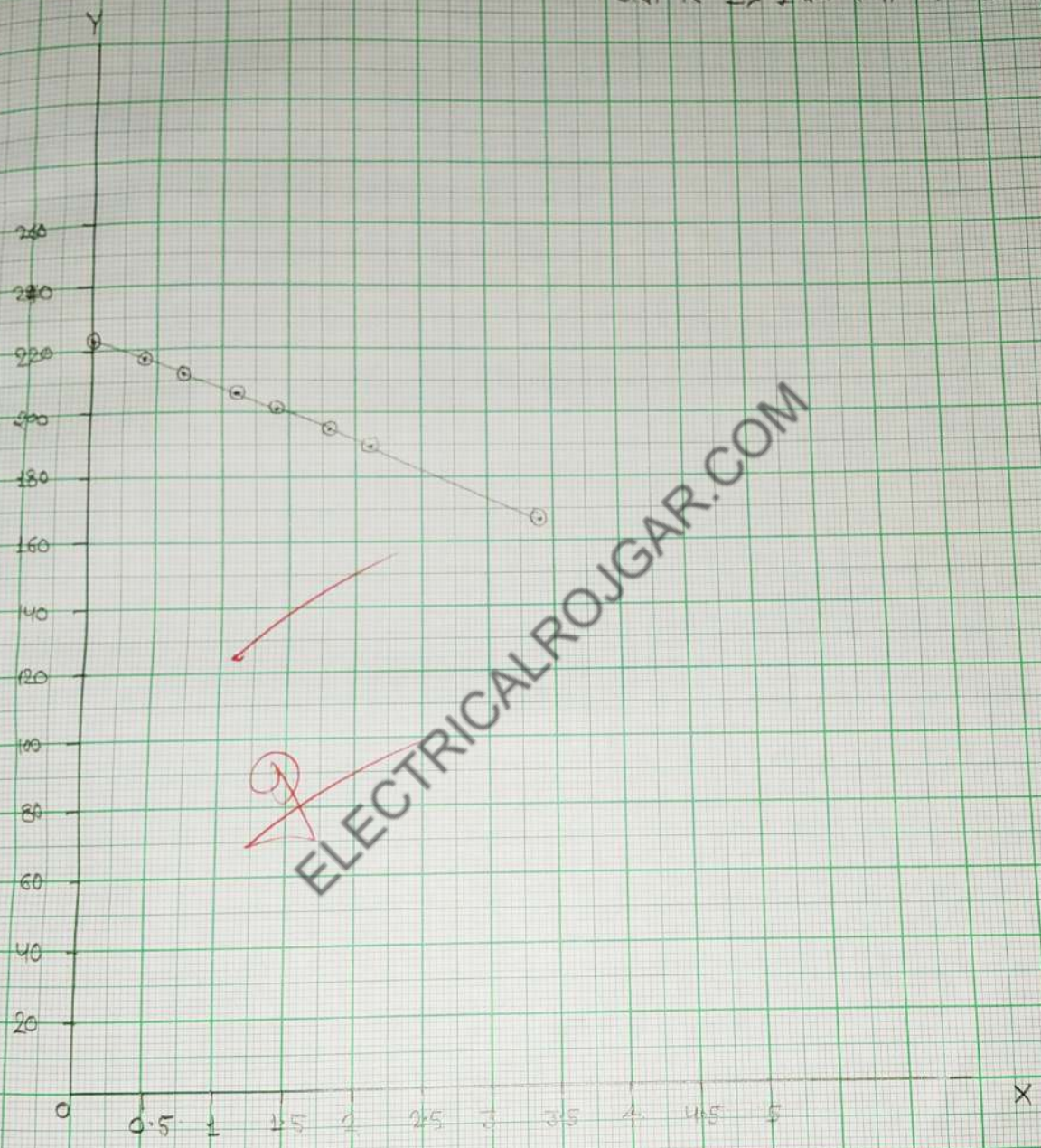
DIFFERENTIAL LONG SHUNT COM. GENERATOR

X 31.1 V  $\Rightarrow$   $\pm$  1.51 A = 20V  
Y 21.1 A  $\Rightarrow$   $\pm$  1.51 A = 0.5 amp



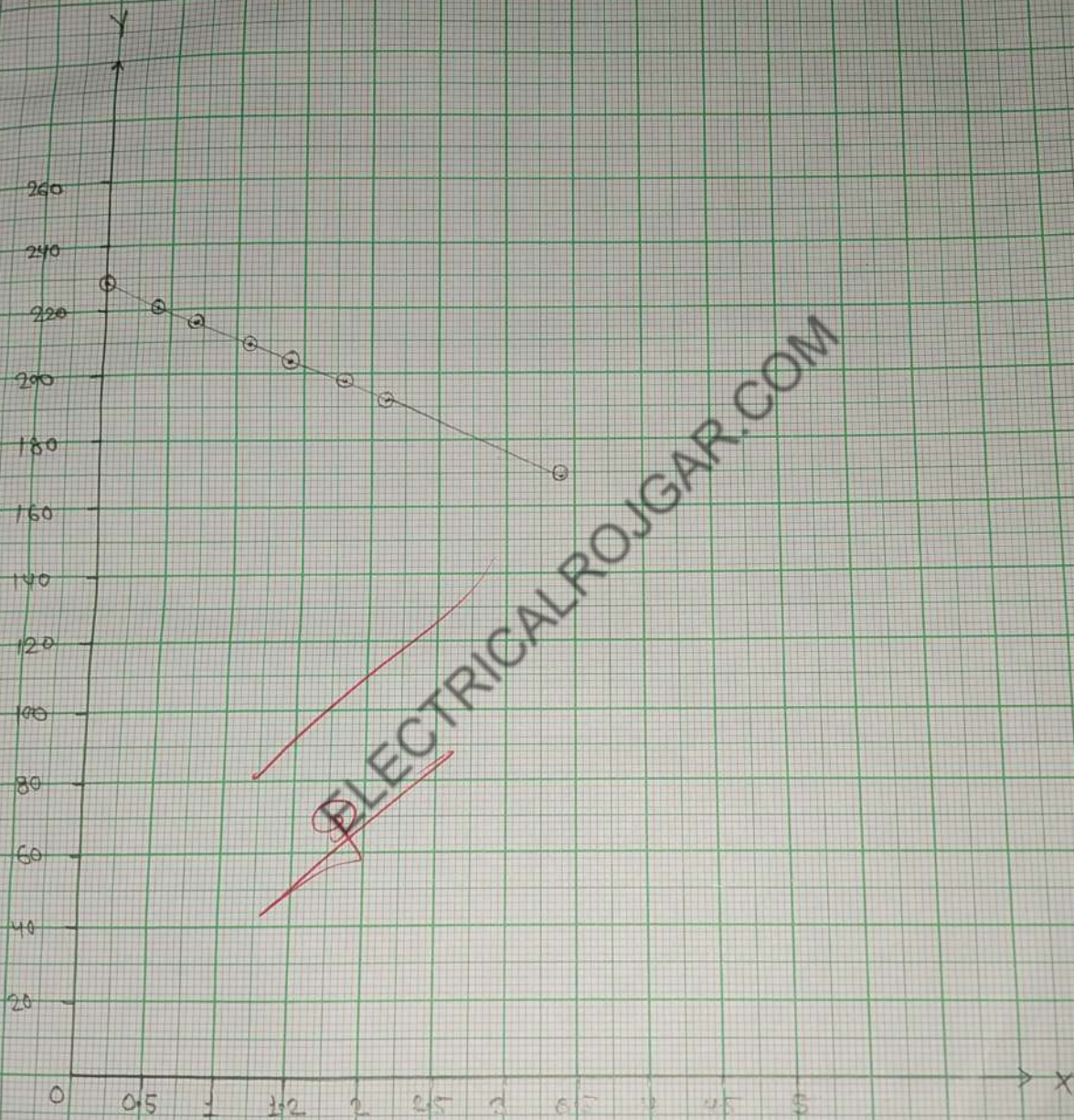
DIFFERENTIAL SHORT SHUNT COMPOUND GENERATOR

Y अक्ष पर  $\Rightarrow$  वोल्टता = 20 VOLT  
X अक्ष पर  $\Rightarrow$  एम्पिअर = 0.5 Amp



COMMULATIVE SHORT SHUNT COMPOUND GENERATOR.

Y अक्ष पर  $\Rightarrow$  वोल्टता = 200 V  
 X अक्ष पर  $\Rightarrow$  धारा = 0.5 Amp



COMMULATIVE LONG SHUNT COMPOUND GENERATOR